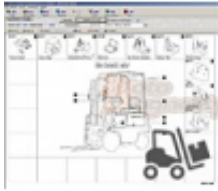

Dane aktualne na dzień: 27-05-2022 17:57

Link do produktu: <http://www.motodiagnostyka.com/toyota-forklift-katalog-czesci-i-akcesoriow-industrial-equipment-epc-spare-parts-accessories-for-the-toyota-industrial-equipment-p-758.html>



Toyota forklift - katalog części i akcesoriów - Industrial Equipment EPC Spare Parts & accessories for the Toyota industrial equipment

Cena	399,00 zł
------	------------------

Dostępność	Dostępny
------------	-----------------

Opis produktu

Katalog części i akcesoriów dla wózków widłowych Toyota - Industrial Equipment EPC

Forklift Trucks (Engine) - Wózki widłowe spalinowe :

Modele:

2FG7,9 8103-9704
4FG/3FD10,14,15,18 7804-8608
3FG/3FD20,25.FG/FD23.4FG/4FD20,23,25 7804-8608

2FG/3FD28,30.FG/FD28 7804-8608
3FGC10,13,15 8010-8809
4FGC/2FDC20,25.FGC/FDC18,23 8002-8803
3FGC/2FDC30.FGC/FDC28 8002-8803
FDT25 6909-0406
5FG/5FD10,14,15,18 8605-9401
5FG/5FD20,23,25 8605-9401
5FG/5FD28,30 8608-9401
5FGC10,13,15 8809-9312
5FDC20,25/5FGC18,20,23,25 8803-9312
5FDC30/5FGC28,30 8803-9312
6FG/6FD10,14,15,18 9401-9808
6FG/6FD20,23,25 9310-9808
6FG/6FD28,30 9401-9808
40-3FG7,9 9704-
7FG/7FD10,15,20,25,30,J35,K20-K30 9808-0609
8FG/8FD10-30,J35.K20-K30 0608-
3FD/3FG33,35,40.FDE/FGE35,FD/FG45 8004-8806
2FDA30,35 8105-8904
3FD/3FG50,60.FD70 7712-9012
FD100 6707-8403
FD150.FDA150 7109-8606
FD200,250.FDJ200 7503-8606
FD350.FD370.FD400 8103-9709
FGC33,35,40,45.FDC33,35,40,45 8212-9703
3FDE60,70.3FD80 8210-9012
2FD100,115,135 8403-9307
2FD150,180,200 8606-0010
5FD/5FG33,35,40,45,A50,E35 8806-9609
5FG50,60.5FDM60,70.5FD50,60,70,80 9012-
3FD100,115,135.3FDE150,160 9307-0409
6FD/6FG33,35,40,45,A50,E35 9609-9812
7FD/7FG35,40,45,A50,K40 9812-
4FD150,180,200,230,240 0408-
4FD100,115,120,135.4FDK150,160 0408-
5FGF/5FDF15,18 8710-9409
5FGF/5FDF20 8710-8911
5FGU/5FDU10,15,18 9003-9507
5FGU/5FDU20,25 9005-9507
5FGU/5FDU30 9005-9507
5FGCU10,13,15 9105-9507
5FDCU20,25/5FGCU18,20,25 9005-9507
5FGCU/5FDCU30 9005-9507
5FD/5FGF30 9107-9409
6FDN20,25 9407-9903
6FDN30 9407-9903
6FGA/6FDA15,18 9407-9904
6FGA/6FDA20,25 9407-9904
6FGA/6FDA30 9407-9904
6FGF/6FDF15,18 9409-9906
6FGF/6FDF20,25 9409-9907

6FGF/6FDF30 9409-9907
6FGU/6FDU15,18 9507-9909
6FGU/6FDU20,25 9507-9909
6FGU/6FDU30 9507-9909
6FGCU15,18 9507-0006
6FGCU20,25 9507-9909
6FGCU30 9507-9909
02-5FDU/5FGU35,40,45 9606-9703
5FDN50,60 9607-9802
6FDU/6FGU33,35,40,45,A50 9703-0011
6FGCU33,35,45 9703-0012
6FDN35 9609-9711
7FGF/7FDF15,18,20,25,30.7FG/7FDJF35 9904-0708
7FGU/7FDU15-32.7FGCU20-32 9908-0701
7FGCU15,18.7FGCSU20 0006-0806
7FG/7FD/7FGCU35-U80,KU40,AU50 0011-
7FGN15-30,7FDN15-30 0301-0609
8FGN15-30,8FDN15-30 0609-
7FGU/7FDU15-32.7FGCU20-32 9908-0701
7FGCU15,18.7FGCSU20 0006-0806
7FG/7FD/7FGCU35-U80,KU40,AU50 0011-
7FGN15-30,7FDN15-30 0301-0609
8FGN15-30,8FDN15-30 0609-
8FGCU15,18,S20 0612-
8FGU/DU15,18,20,25,30,32 0612-
02-8FG/DF15.18.20.25.30,J35 0708

2FBP5.FBP10 7811-9309
FBR9 7505-9103
FBRE10,13,15,18 7512-8704
3FBR10,13,15,18 7512-8704
FBRE20,25,28 8203-9503
2FBR20,25,30 8203-9002
RFBA7,12.RFBE12 8312-9509
HB/HBW/HBWA20,30.HBA20 8309-9105
2FBR20,25,30 8203-9002
RFBA7,12.RFBE12 8312-9509
HB/HBW/HBWA20,30.HBA20 8309-9105
5FBR10,13,15,18 8704-9503
5FBRE10,14,16 8704-9503
6FBR10,13,15,18 9411-
6FBRE12,14,16,20 9503-
7FBR10,13,15,18.7FBR(S)20,25,30 0101-

Forklift Trucks (Electric Reach):

Code:

2FBP5.FBP10 7811-9309
FBR9 7505-9103
FBRE10,13,15,18 7512-8704
3FBR10,13,15,18 7512-8704
FBRE20,25,28 8203-9503
2FBR20,25,30 8203-9002
RFBA7,12.RFBE12 8312-9509
HB/HBW/HBWA20,30.HBA20 8309-9105
2FBR20,25,30 8203-9002
RFBA7,12.RFBE12 8312-9509
HB/HBW/HBWA20,30.HBA20 8309-9105
5FBR10,13,15,18 8704-9503
5FBRE10,14,16 8704-9503
6FBR10,13,15,18 9411-
6FBRE12,14,16,20 9503-
7FBR10,13,15,18.7FBR(S)20,25,30 0101-

Forklift Trucks (Electric):

Code:

FB5 7408-9609
2FB7,9 8104-9609
4FB10,14,15 8003-9003
4FB/4FBJ20,25 8003-9105
2FB30 8003-9003
2FBCA10,13,15 7707-9111
2FBCA20,25 7707-9111
FBCA30 7707-9111
FBA10,15 8003-9003
FBA20,25 8003-9003
FBA30 8009-8910
FBE10,13,15,18 7805-8411
FB35,40 7402-0302
FB50,60 7604-
2FBE10,13,15,18 8412-9301
FBM16 8911-9606
FBM20,25 8911-9609
FBM30 8911-9606
5FB10,14,15,18 9004-9511
5FB20,25 9004-9511
5FB30 9004-9511
5FBC13,15 9111-9609
5FBC18,20,25 9108-9609
5FBC28,30 9111-9609
5FBE10,13,15,18 9301-0304
6FB10,14,15,18 9511-9908
6FB20,25 9511-9908
6FB30 9511-9908
3FB7,9 9609-
7FB/7FBH10,14,15,18,20,25.7FB30,J35 9908-
7FBE10,13,15,18,20 0301-
5FBCU15 9507-0107
5FBCU18,20,25.5FBCHU20,25 9507-0107
5FBCU30.30-5FBCU30 9507-0107
FBESF10,12,15 9604-0607
FBMF16 9606-0302
FBMF20,25 9606-0302
FBMF30 9606-0302
7FBCU15,18,20,25,30,32.7FBCHU25 0106-
7FBCU35,45,55.30-7FBCU35,45,55 0106-
FBMF30 9606-0302
7FBCU15,18,20,25,30,32.7FBCHU25 0106-
7FBCU35,45,55.30-7FBCU35,45,55 0106-
7FBMF16,18,20,25,30,35 0208-
7FBMF40,45,50 0208-
7FBEF15,16,18,20 0304-
7FBEU15.18.20,7FBEHU18 0304-
7FBEST10,13,15 0512-

Shovel Loaders:

Modele:

2SDK4 7708-8712
SGK6.SDK6 7704-8603
SDK8 7809-8903
2SGH7.SD7 7507-9212
2SG/2SD10,12 7405-9009
SX,SY 6804-8805
SD/2SD20,23,25 6308-9106
3SD20,23,25 7911-9706
SD/2SD20,23,25 6308-9106

3SD20,23,25 7911-9706
2SDK6,7,8.2SGK6.3SDK6,7,8 8603-9701
3SDK5 8712-9701
3SDK/4SDK3,4 8712-
SDK10.4SDK10 8902-
4SDK5,6,8 9610-
30-5SDK5,8,9,10,11 0808-

Sweeper:

Modele:

QB12.QBA12 7601-9204
2QBW9 8302-8910

Towing Tractors:

Modele:

TB12.TBA12 8105-
TG10,TD10 6709-9706
TG/TD20,25 7309-8912
3TG35.3TD35,45 8202-
02-2TD15,18,23.2TG/2TD20,25 8912-
TEA15 9309-0509
2TG.TD10 9706-
CBT4,6.CBTY4 0309-
02-2TD15,18,23.2TG/2TD20,25 8912-
TEA15 9309-0509
2TG.TD10 9706-
CBT4,6.CBTY4 0309-
2TE15 0508-
4CBT2,3,Y2,4CBTK4,YK4 0602-
02-2TDU25 0805-
TD10 8002-9706

Lift Trucks:

Modele:

JD18,JD21L 7811-8610
JD12,JD15L 7811-9701
2JD18,21 8610-9806
2JD25 8707-9806

Logistic Solution System:

Modele:

ATBE1 0603-

